



**WEBSITE:**  
[konyvtar.btk.elte.hu/en](http://konyvtar.btk.elte.hu/en)



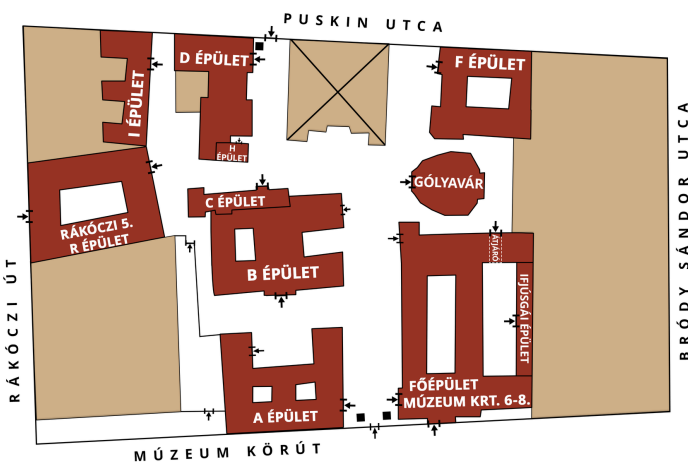
**FACEBOOK:**  
[facebook.com/elte.btk.kari.konyvtar](https://facebook.com/elte.btk.kari.konyvtar)



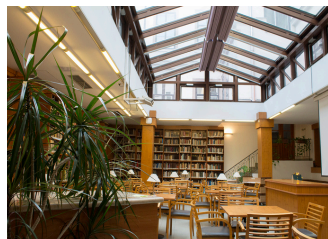
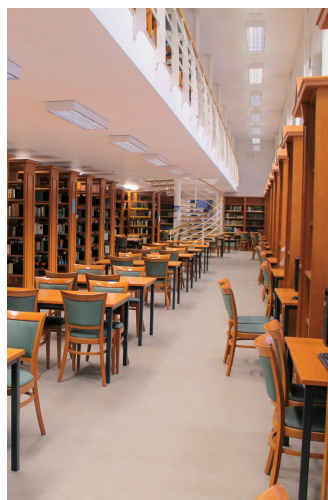
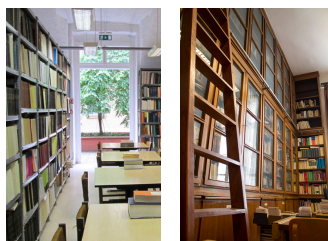
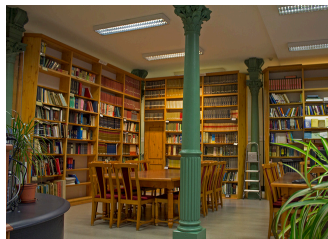
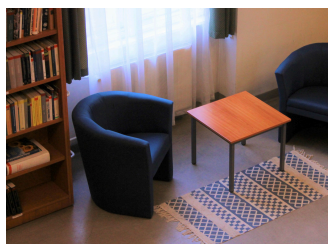
**INSTAGRAM:**  
[instagram.com/elte.btk.kari.konyvtar](https://instagram.com/elte.btk.kari.konyvtar)



**E-MAIL:**  
[konyvtar@btk.elte.hu](mailto:konyvtar@btk.elte.hu)



H-1088 Budapest, Múzeum krt. 4., 6-8.



**ELTE**  
 FACULTY OF  
 HUMANITIES

FACULTY LIBRARY



48

LIBRARY UNITS

The departmental and institute libraries, special collections, and the Central Reading Hall - 48 separate library units in total - are organized into 7 specialized libraries and work as one cooperating organization, called the ELTE Faculty of Humanities Library

IN  
7

BUILDINGS

Our member libraries currently operate in seven buildings out of eight on the campus

1,2

MILLION

We catalog, store and provide access to approximately 1,2 million pieces of library material (documents) in total

0

FORINT

All ELTE citizens can use ELTE's libraries free of charge after registration

DEPARTMENT  
SPECIFIC

We provide specially tailored, subject specific library services, while several of our collections are unique both nationally and internationally

UNIQUE

The Faculty's libraries in many cases include the papers and collections of our former professors and renowned scholars, their private libraries, and original prints and manuscripts that are unique and unparalleled in the world can be found among our museum treasures as well

ELTE  
FoH

We collect documents published by the Faculty members, PhD dissertations, and some libraries also collect the BA and MA thesis papers submitted at their Institutes

PAST  
and  
FUTURE

In addition to older publications, new and recent literature is also added to library collections

**CENTRAL LIBRARY**

- Central Reading Hall (main building)
  - Institute of Arts Communication and Music Collection
  - Institute for The Theory of Art and Media Studies Collection
- Institute of Library and Information Science Library (main building)
- Department of Translation and Interpreting Library (building "I")
- Department of Hungarian as a Foreign Language Collection (building "F")

**LIBRARY OF ENGLISH-AMERICAN AND GERMANIC STUDIES**

- School of English and American Studies Library (main building)
- Institute of Germanic Studies Library (main building)

**LIBRARY OF HUNGARIAN LINGUISTICS, LITERATURE AND STUDIES OF PHILOSOPHY**

- Institute of Hungarian Linguistics and Finno-Ugric Studies Library (building "A")
- Department of Finno-Ugric Studies Library (building "I")
- Institute of Hungarian Literature and Cultural Studies Toldy Ferenc Library (building "A")
- Institute of Philosophy Library (building "I")

**LIBRARY OF ARCHAEOLOGICAL SCIENCES, ANCIENT AND CLASSICAL STUDIES**

- Institute of Archaeological Sciences Library (building "B")
- Institute of Ancient and Classical Studies Harmatta János Library (building "F")
  - Ancient Philosophy Collection
  - Greek Department Working Group Library
  - Religious and Liturgy Science Library
- Department of Assyriology and Hebrew Studies Library (building "F")
- Department of Egyptology Library (building "B")

**LIBRARY OF ROMANCE, SLAVONIC AND BALTIC PHILOLOGY STUDIES**

- Department of French Language and Literature Library (building "C")
- Department of Italian Language and Literature Library (building "C")
- Department of Portuguese Language and Literature Library (building "C")
- Department of Romanian Philology Library (building "C")
- Department of Spanish Language and Literature Library (building "C")
- Institute of Slavonic and Baltic Philology Library (building "D")

**LIBRARY OF EAST ASIAN AND ORIENTAL STUDIES**

- Institute of East Asian Studies Library (main building)
  - Mongol and Inner Asian Collection
  - Collection of the Budapest Centre for Buddhist Studies
- Indological and Indo-European Linguistic Collection (Ifjúsági épület)
- Department of Iranian Studies Collection (building "D")
- Department of Semitic and Arabic Studies Collection (building "I")
- Department of Turkic Studies Library (building "D")

**LIBRARY OF HISTORICAL, ART HISTORY, ETHNOGRAPHY AND FOLKLORE STUDIES**

- Institute of Historical Studies Szekfű Gyula Library (main building)
  - Atelier Department for Interdisciplinary History Library
  - ELTE-CEU Medieval Library
  - Department of Economic and Social History Collection
  - Department of Eastern and Central European History and Historical Russistics Collection
  - Department of Early Modern History Collection
  - Department of Cultural History Collection
  - Department of Ancient History Library
  - Russian Methodology Cabinet and Library
  - Department of Auxiliary Studies of History Collection
  - Department of Modern and Contemporary History Collection
  - Department of Modern and Contemporary Hungarian History Collection
- Institute of Art History Library (main building)
- Györfy István Library of Institute of Ethnography and Folklore (main building)



INFORMATION



CATALOG



IN-HOUSE USE

CIRCULATION  
OF DOCUMENTSUSER  
TRAININGSONLINE  
ADMINISTRATION

DATABASES

COMPUTER  
USAGE